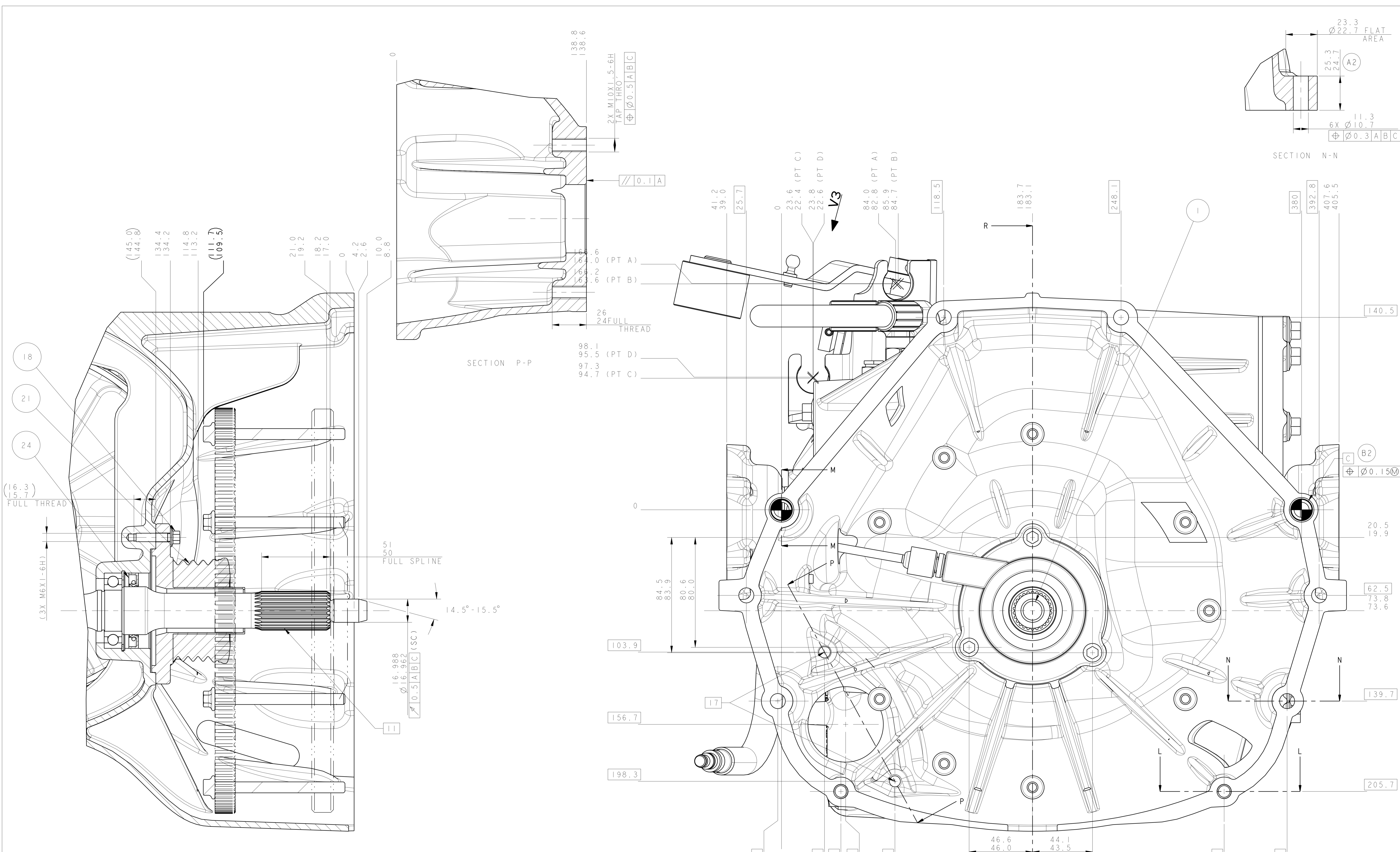


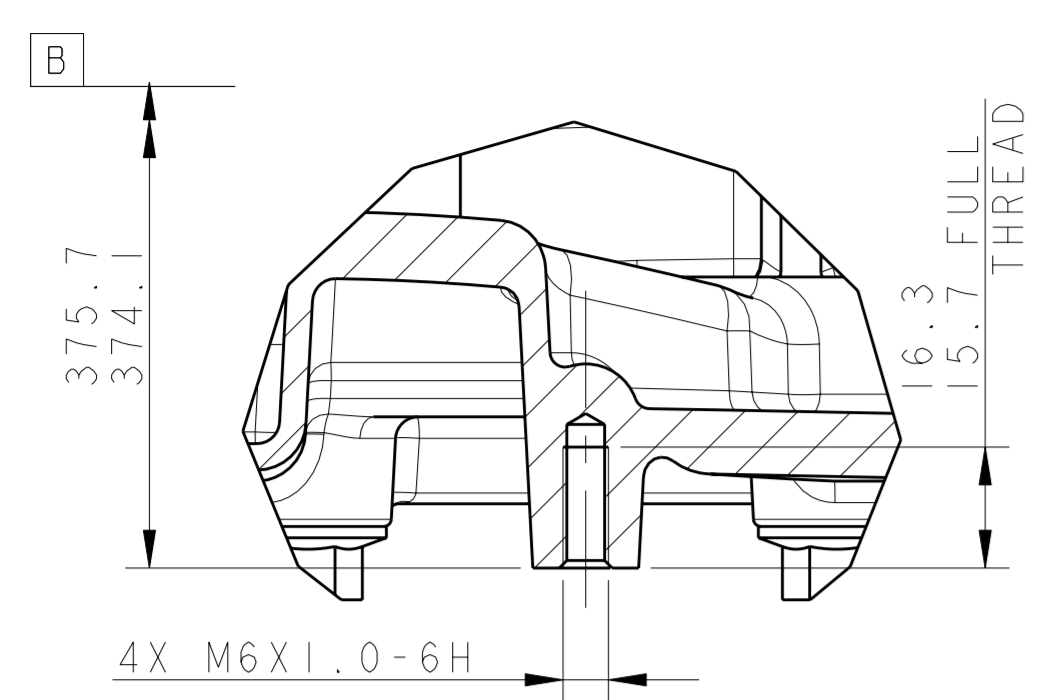
LTRS		REVISIONS		
ORIGINATOR	CHECKER	ENGR APP	MATL APP	
FEASIBILITY APPROVED				
SYS 20030827 G. MILLER2	CMPT 20030827	MFG 20030827 T. WALSH	ASY 20030827 M. LINGREN	
RELEASED 4GTV-7003-AA NVGT-E-11592976-000				
L. KIERNAN	T. WALSH	G. MILLER2		
FEASIBILITY APPROVED				
SYS 20031125 G. MILLER2	CMPT 20031125	MFG 20031125 T. WALSH	ASY 20031125 M. LINGREN	
RELEASED 4GTV-7003-AB NVGT-E-11592976-000				
L. KIERNAN	T. WALSH	G. MILLER2		
A1 DIM 12/1/20.4 WAS 117.5/116.9 A2 DIM 25.3/24.7 WAS 20.3/19.7 A3 DIM 12.5/11.9 WAS 11.3/10.7 (2 PLACES) A4 DIM 17.8/17.2 WAS 11.3/10.7 (2 PLACES) A5 ADD ITEM 17 - 4GTV-7A564-AA TO BOM A6 NOTES 5&6 REMOVED A7 NOTE 21 MODIFIED A8 4GTV-7A564-AA WAS 4R83-7A564-AA FEASIBILITY APPROVED				
FEASIBILITY APPROVED				
RELEASED 4GTV-7003-AC NVGT-E-11592976-000				
L. KIERNAN	T. WALSH	G. MILLER2		
B1: WAS: (Ø 0.05) A NOW: (Ø 0.15) A B2: ADDED: DIM C ADDED: (Ø 0.15) A FEASIBILITY APPROVED				
FEASIBILITY APPROVED				
SYS 20040216 C. HILL4	CMPT	MFG	ASY	
NVGT-E-11614398-000 040216				
S. VANHEERDEN	T. WALSH	G. MILLER2		
C1: ADD ITEM 27-4GTV-7222-AA TO BOM FEASIBILITY APPROVED				
FEASIBILITY APPROVED				
RELEASED 4GTV-7003-AD NVGT-E-11658383-000				
I. KIMBERLEY	T. WALSH	G. MILLER2		
FEASIBILITY APPROVED				
RELEASED 4GTV-7003-AE NVGT-E-11731339-000				
I. KIMBERLEY	T. WALSH	G. MILLER2		
ISS. DATE ALTERATION E.C.N. SIG.				
5	03/03/05	SEE ECN	001003812	1PK
4	26/05/04	SEE ECN	001003428	1PK
3	15/01/04	SEE ECN	001003197	LMK
2	02/12/03	SEE ECN	001003075	LMK
1	02/12/03	SEE ECN	INITIAL ISSUE	LMK
RICHARDO DA SILVA SOUTHAM RD, BARNFORD SEWELL, LEAMINGTON SPA, CV31 1FD TEL: +44 (0)1926 519319 FAX: +44 (0)1926 519300				
MIDLANDS TECHNICAL CENTRE				
DRAWN:- L. KIERNAN		DATE:- 15-Jan-04		SCALE 1:1
CHECKED:- P. MORRIS		DATE:- 11-08-03		
APPROVED:- R. JANCZAK		DATE:- 11-08-03		
REFERENCE 07.03.00				
PART MUST COMPLY WITH MATERIAL SPECIFICATION WSS-M99P9999-A1 TO HELP SAFEGUARD HEALTH, SAFETY AND THE ENVIRONMENT				
DRAFTED IN ACCORDANCE WITH FORD MOTOR COMPANY ENGINEERING CAD AND DRAFTING STANDARDS CURRENT AT INITIAL RELEASE				
			3RD ANGLE PROJ DIMENSIONS ARE IN MILLIMETERS	
CAD TYPE	CAD LOC.	CAD FILE		
PROJ		DRW D70343	IS MASTER	
OPER. NO.	UNIT	DRAWING	4GTV-7003-AE	
DESIGN	DETAIL	TITLE	TRANS ASY	
RICARDO	RICARDO		SHT 2	OF 5
CHECKED	SAFETY			
RICARDO				
SCALE	DATE	DIVISION	Y112	
RICARDO	20030327	PLANT		



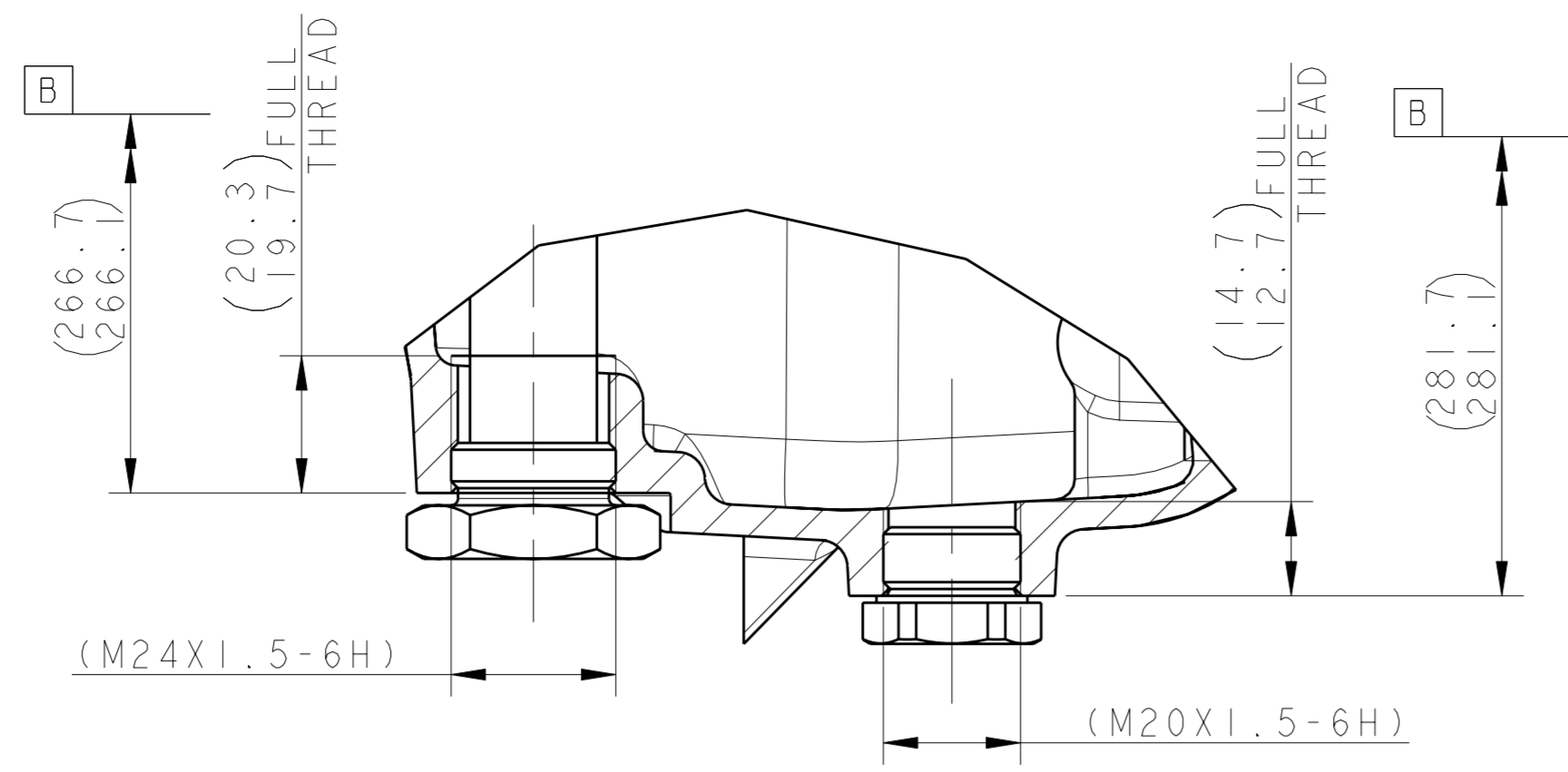
SPLINE DATA EXTERNAL SPLINE ANSI B92.1	
FLAT ROOT, SIDE FIT, CLASS 5	
SPLINE	
DP (MODULE)	24/48 (1.05833)
NUMBER OF TEETH	26
NORMAL PRESSURE ANGLE	30°
HELIX ANGLE	0°
HAND OF HELIX	STRAIGHT
BASE DIA (REF.)	23.830
PITCH DIA	27.517
MAJOR DIA	28.575/28.448
MINOR DIA	25.070 min.
NORMAL FILLET RADIUS	0.2
CIRCULAR SPACE WIDTH	
MAX EFFECTIVE	1.661
MIN ACTUAL	1.593
MAX MEASUREMENT OVER PINS	30.612
MIN MEASUREMENT OVER PINS	30.561
PIN DIA.	2.032

LTRS		REVISIONS		
ORIGINATOR	CHECKER	ENGR APP	MATL APP	
FEASIBILITY APPROVED				
SYS	CMPT	MFG	ASY	
20030827	20030827	20030827	20030827	
G. MILLER2		T. WALSH	M. LINGREN	
RELEASED 4GTV-7003-AA				
NVGT-E-11592976-000				
L. KIERNAN	T. WALSH	G. MILLER2		
FEASIBILITY APPROVED				
SYS	CMPT	MFG	ASY	
20031125	20031125	20031125	20031125	
G. MILLER2		T. WALSH	M. LINGREN	
RELEASED 4GTV-7003-AB				
NVGT-E-11586392-000				
L. KIERNAN	T. WALSH	G. MILLER2		
A1 DIM 121/120.4 WAS 117.5/116.9				
A2 DIM 25.3/24.7 WAS 20.3/19.7				
A3 DIM R12.5/11.9 WAS R8.8/8.2 (2 PLACES)				
A4 DIM 17.8/17.2 WAS 11.3/10.7 (2 PLACES)				
A5 ADD ITEM 17 - 4GTV-7A564-AA TO BOM				
A6 NOTES 5&6 REMOVED				
A7 NOTE 21 MODIFIED				
A8 4GTV-7A564-AA WAS 4R83-7A564-AA				
FEASIBILITY APPROVED				
SYS	CMPT	MFG	ASY	
RELEASED 4GTV-7003-AC				
NVGT-E-11592976-000				
L. KIERNAN	T. WALSH	G. MILLER2		
B1: WAS: $\phi 0.05$ A NOW: $\phi 0.15$ A				
B2: ADDED: DIM C				
ADDED: $\phi 0.15$ A				
FEASIBILITY APPROVED				
SYS	CMPT	MFG	ASY	
NVGT-E-11614398-000 040216				
S. VANHEERDEN	T. WALSH	G. MILLER2		
C1: ADD ITEM 27-4GTV-7222-AA TO BOM				
FEASIBILITY APPROVED				
SYS	CMPT	MFG	ASY	
NVGT-E-11628643-000				
M. DOWLING	T. WALSH	G. MILLER2		
FEASIBILITY APPROVED				
SYS	CMPT	MFG	ASY	
RELEASED 4GTV-7003-AD NVGT-E-11658383-000				
I. KIMBERLEY	T. WALSH	G. MILLER2		
FEASIBILITY APPROVED				
SYS	CMPT	MFG	ASY	
RELEASED 4GTV-7003-AE NVGT-E-11731339-000				
I. KIMBERLEY	T. WALSH	G. MILLER2		
ISS. DATE ALTERATION E.C.N. SIG.				
5	03/03/05	SEE ECN		001003812 1PK
4	26/05/04	SEE ECN		001003428 1PK
3	15/01/04	SEE ECN		001003197 LMK
2	02/12/03	SEE ECN		001003075 LMK
1	02/12/03	SEE ECN		INITIAL ISSUE LMK
SCALE 1:1				
DRAWN: L. KIERNAN DATE: 15-Jan-04				
CHECKED: P. MORRIS DATE: 11-08-03				
APPROVED: R. JANCZAK DATE: 11-08-03				
REFERENCE 07.03.00				
PART MUST COMPLY WITH MATERIAL SPECIFICATION WSS-M99P9999-A1				
TO HELP SAFEGUARD HEALTH, SAFETY AND THE ENVIRONMENT				
DRAFTED IN ACCORDANCE WITH FORD MOTOR COMPANY ENGINEERING CAD AND DRAFTING STANDARDS CURRENT AT INITIAL RELEASE				
3RD ANGLE PROJ DIMENSIONS ARE IN MILLIMETERS				
CAD TYPE	CAD LOC.	CAD FILE	IS MASTER	
PROE	-	DRW D70343		
OPER. NO.	UNIT	DRAWING	4GTV-7003-AE	
DESIGN	DETAIL	TITLE	TRANS ASY	
RICARDO	RICARDO			
CHECKED	SAFETY			
RICARDO				
SCALE	DATE	DIVISION	Y112	
RICARDO	20030327	PLANT		

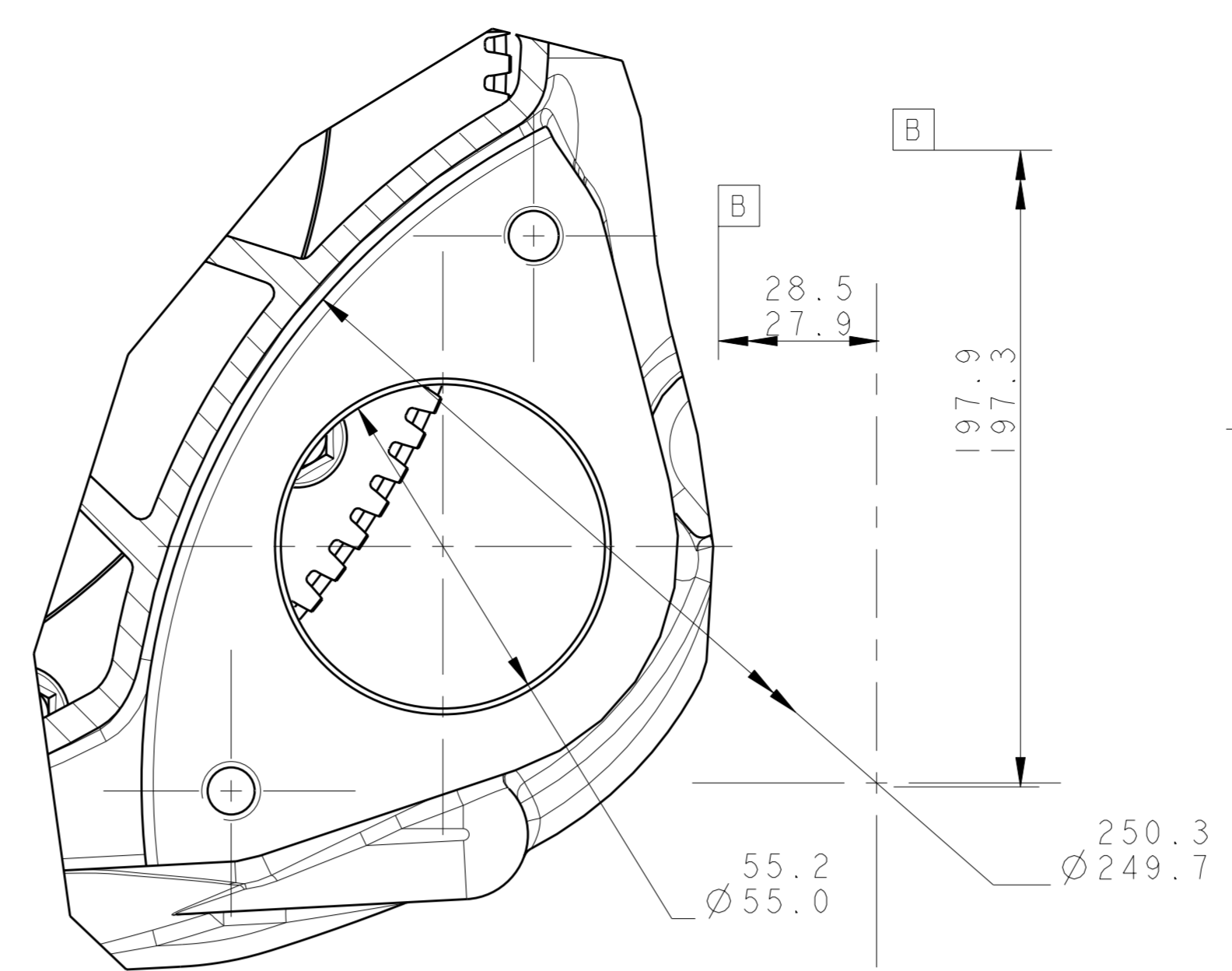
DRW SIZE A0/E



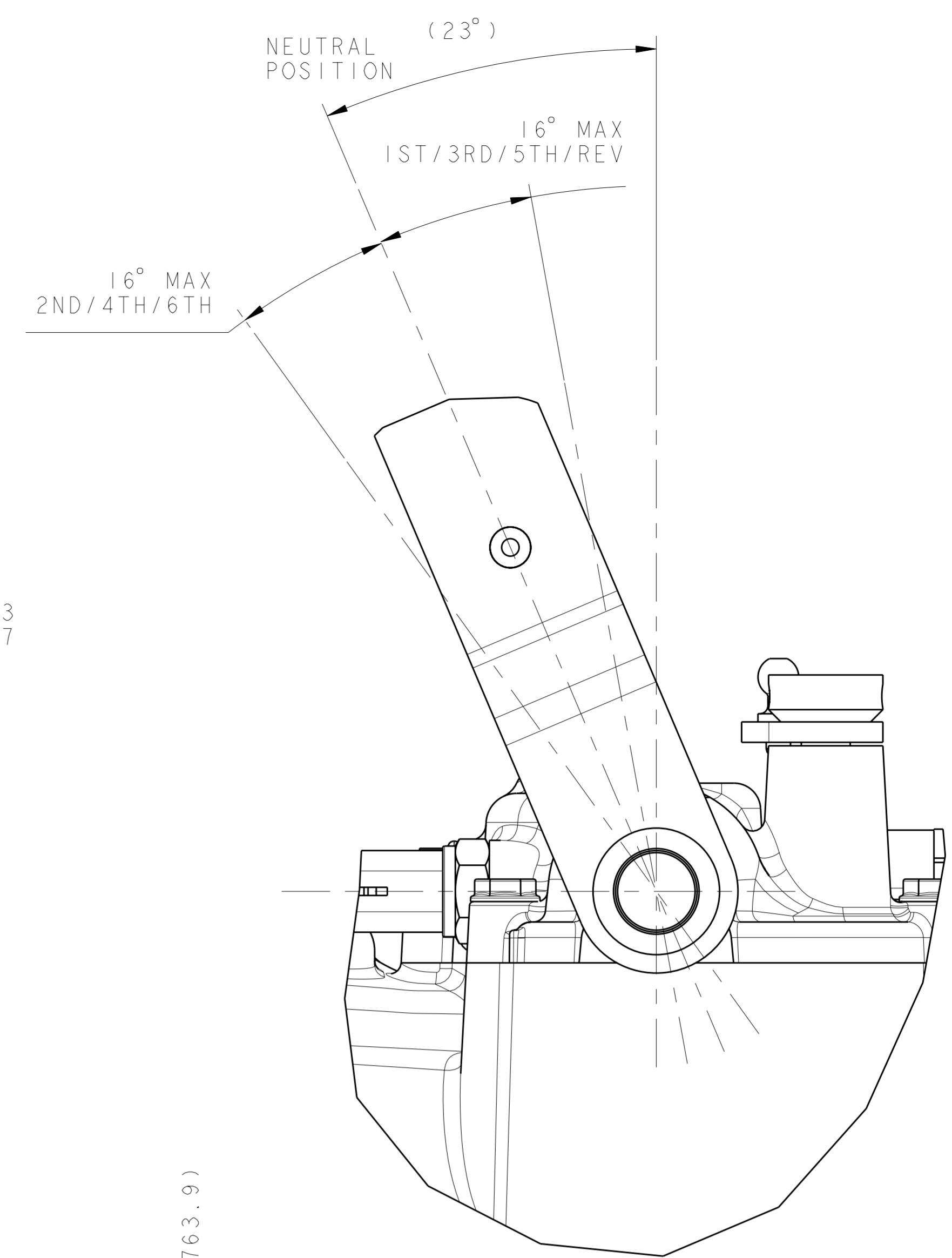
SECTION K-K



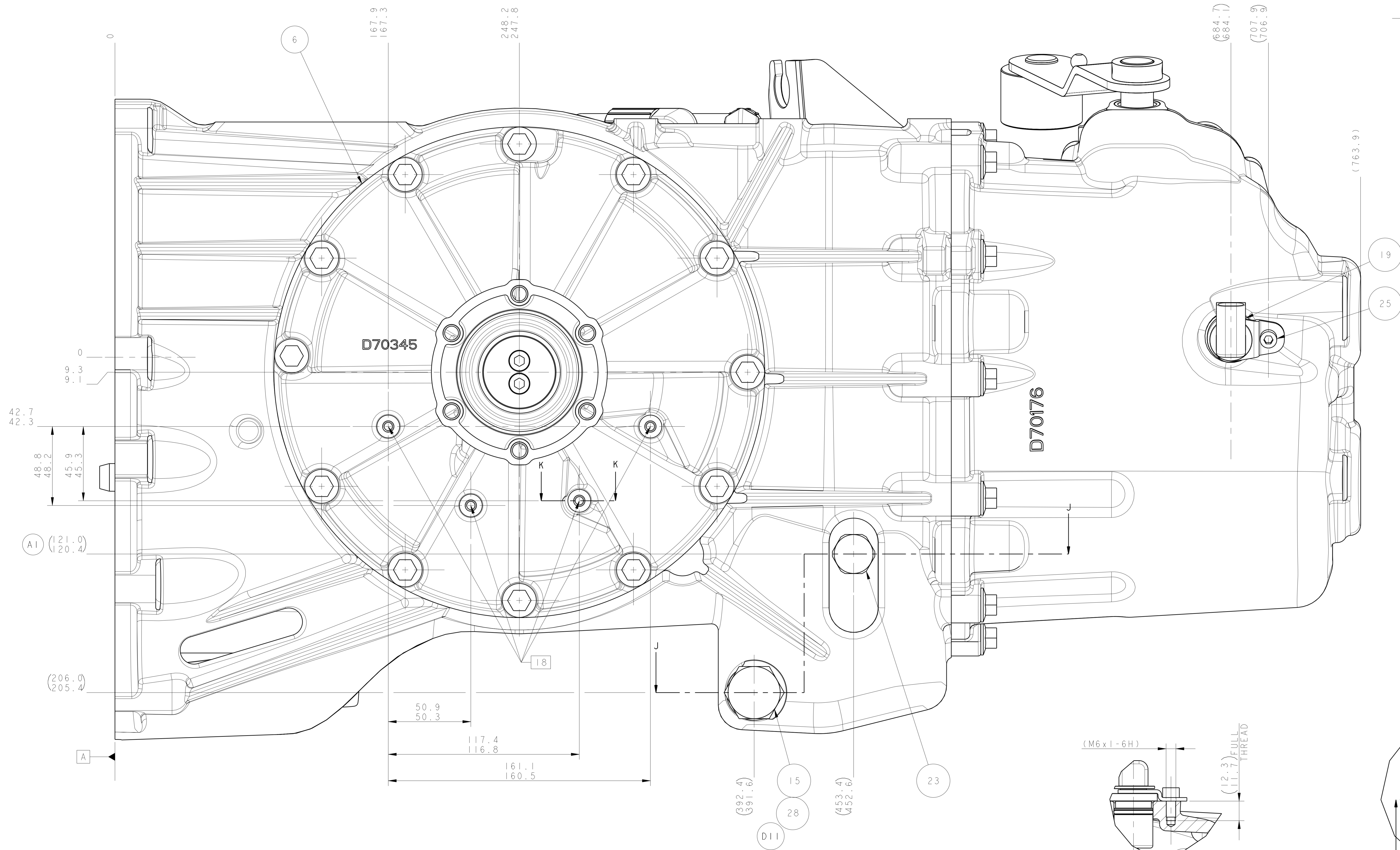
SECTION J-J



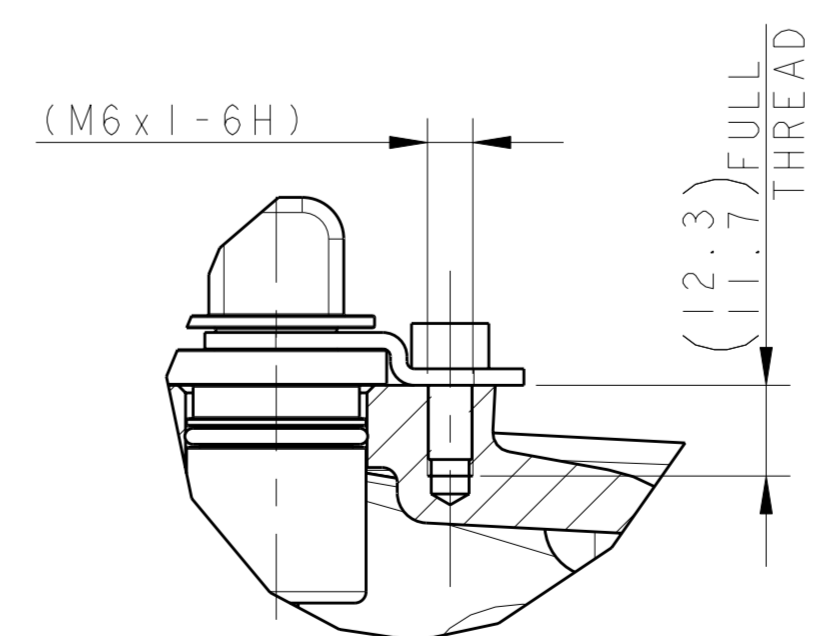
VIEW ON ARROW V6, SEE SHEET 1



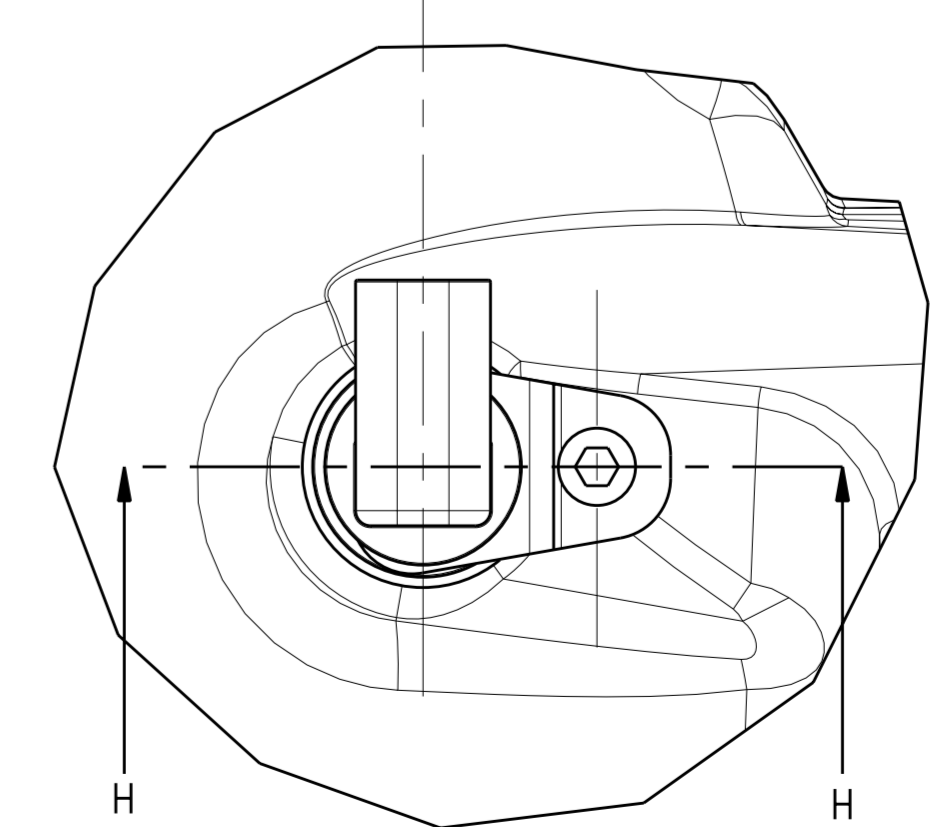
VIEW ON ARROW V3, SEE SHEET 3



LEFT SIDE VIEW



SECTION H-H



LTRS		REVISIONS			
ORIGINATOR	CHECKER	ENGR APP	MATL APP		
FEASIBILITY APPROVED					
SYS 20030827 G. MILLER2	CMPT 20030827	MFG 20030827 T. WALSH	ASY 20030827 M. LINGREN		
RELEASED 4GTV-7003-AA NVGT-E-11592976-000					
L. KIERNAN	T. WALSH	G. MILLER2			
FEASIBILITY APPROVED					
SYS 20031125 G. MILLER2	CMPT 20031125	MFG 20031125 T. WALSH	ASY 20031125 M. LINGREN		
RELEASED 4GTV-7003-AB NVGT-E-11596392-000					
L. KIERNAN	T. WALSH	G. MILLER2			
A1 DIM 121/120.4 WAS 117.5/116.9 A2 DIM 25.3/24.7 WAS 20.3/19.7 A3 DIM R12.5/11.9 WAS R8.8/8.2 (2 PLACES) A4 DIM 17.8/17.2 WAS 11.3/10.7 (2 PLACES) A5 ADD ITEM 17 - 4GTV-7A564-AA TO BOM A6 NOTES 5&6 REMOVED A7 NOTE 21 MODIFIED A8 4GTV-7A564-AA WAS 4R83-7A564-AA FEASIBILITY APPROVED					
SYS	CMPT	MFG	ASY		
RELEASED 4GTV-7003-AC NVGT-E-11592976-000					
L. KIERNAN	T. WALSH	G. MILLER2			
B1: WAS: Ø0.05[A] NOW: Ø0.150[A] B2: ADDED: Ø0.150[A] ADDED: Ø0.150[A] FEASIBILITY APPROVED					
SYS	CMPT	MFG	ASY		
NVGT-E-11614398-000					
S. VANHEERDEN	T. WALSH	G. MILLER2			
C1: ADD ITEM 27-4GTV-7222-AA TO BOM FEASIBILITY APPROVED					
SYS	CMPT	MFG	ASY		
NVGT-E-11628643-000					
M. DOWLING	T. WALSH	G. MILLER2			
D1: ITEM 28 ADDED. FEASIBILITY APPROVED					
SYS	CMPT	MFG	ASY		
RELEASED 4GTV-7003-AD NVGT-E-11658383-000					
I. KIMBERLEY	T. WALSH	G. MILLER2			
FEASIBILITY APPROVED					
SYS	CMPT	MFG	ASY		
RELEASED 4GTV-7003-AE NVGT-E-11731339-000					
I. KIMBERLEY	T. WALSH	G. MILLER2			

ISS.	DATE	ALTERATION	E. C. N.	SIG.
5	03/03/05	SEE ECN		001003812 LMK
4	26/05/04	SEE ECN		001003428 LMK
3	15/01/04	SEE ECN		001003197 LMK
2	02/12/03	SEE ECN		001003075 LMK
1	02/12/03	SEE ECN		INITIAL ISSUE LMK

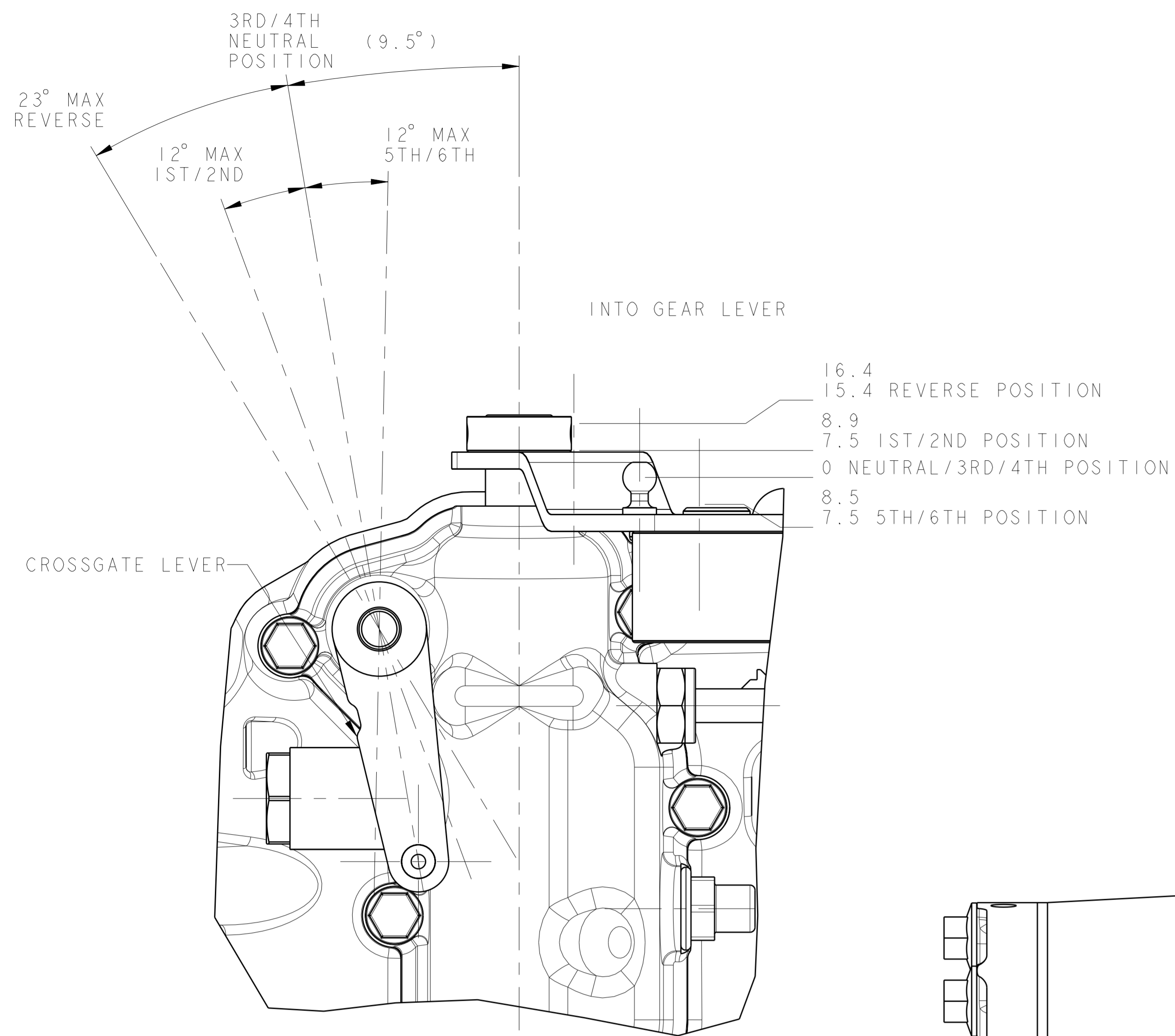
RICHARDO DA SILVA
 140 SOUTHAM RD, BROADFORD SEWELL,
 LEAMINGTON SPA, CV31 1FD
 TEL: +44 (0)1926 519319
 FAX: +44 (0)1926 519300
 MIDLANDS TECHNICAL CENTRE
 DRAWN:- L. KIERNAN DATE:- 15-Jan-04
 CHECKED:- P. MORRIS DATE:- 11-08-03
 APPROVED:- R. JANCZAK DATE:- 11-08-03

CAD TYPE	CAD LOC.	CAD FILE	SCALE
PROJ	-	DRW D70343	1:1
OPER. NO.	UNIT	DRAWING	IS MASTER
DESIGN	DETAIL	TITLE	SHT
RICARDO	RICARDO	TRANS ASY	OF 5
CHECKED	SAFETY		
RICARDO			
SCALE	DATE	DIVISION	
RICARDO	20030327	PLANT	Y112

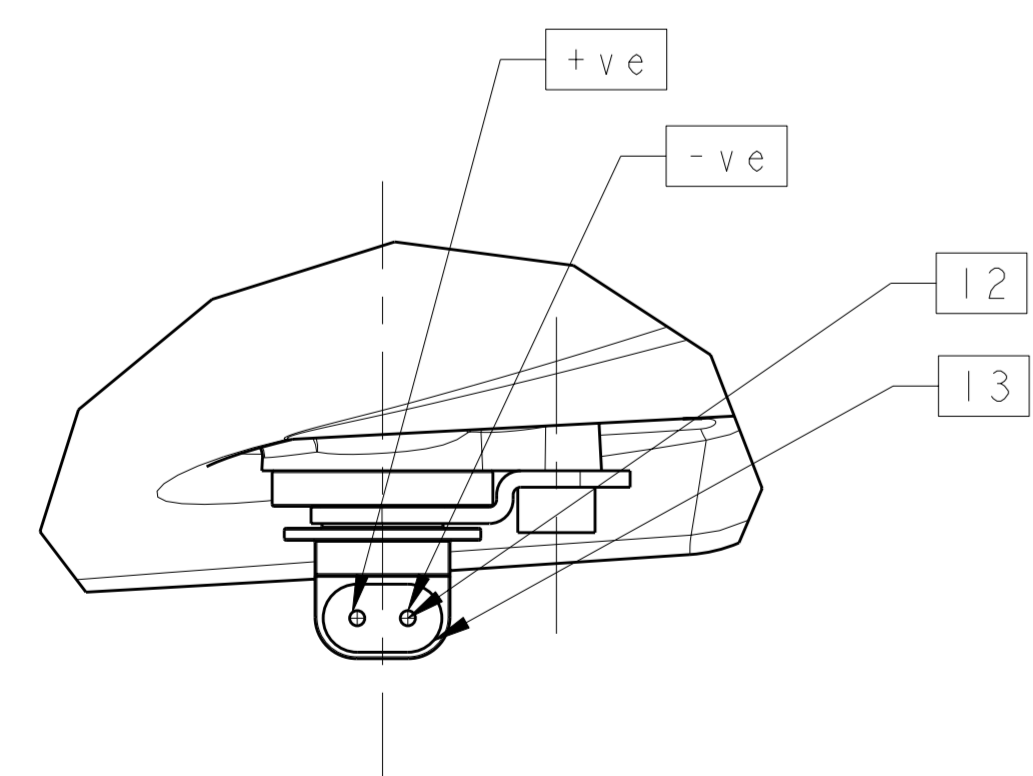
REFERENCE 07.03.00
 PART MUST COMPLY WITH MATERIAL SPECIFICATION WSS-M99P9999-A1
 TO HELP SAFEGUARD HEALTH, SAFETY AND THE ENVIRONMENT
 DRAFTED IN ACCORDANCE WITH FORD MOTOR
 COMPANY ENGINEERING CAD AND DRAFTING
 STANDARDS CURRENT AT INITIAL RELEASE
 3RD ANGLE PROJ
 DIMENSIONS ARE
 IN MILLIMETERS

Ford Motor Company

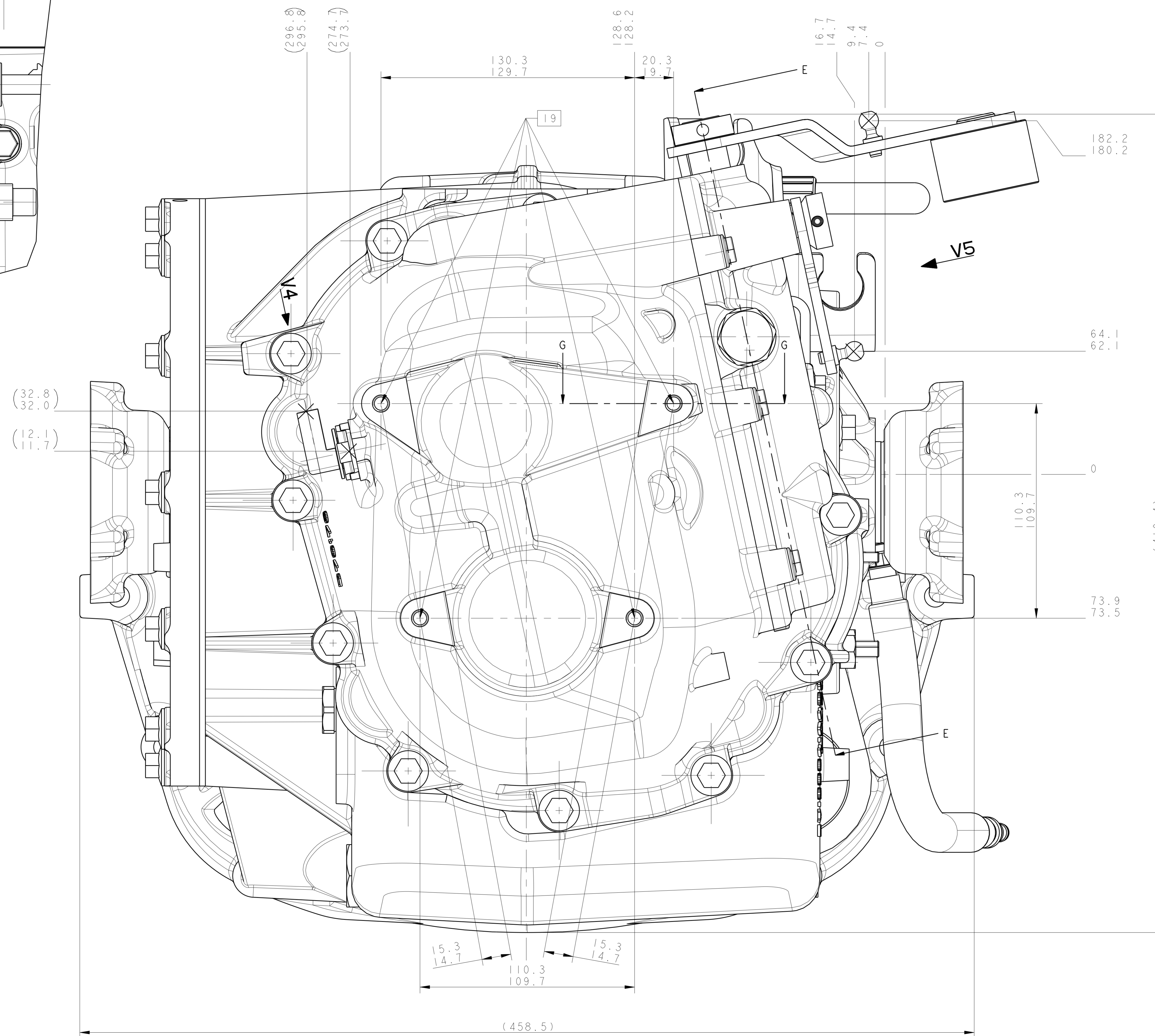
DRW SIZE A0/E



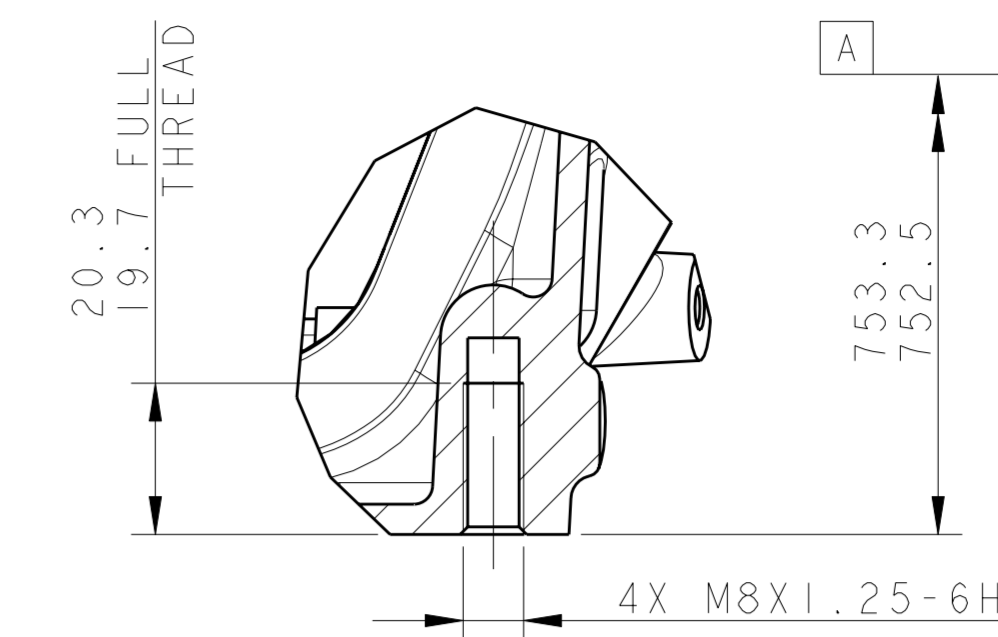
TRUE VIEW ON V5



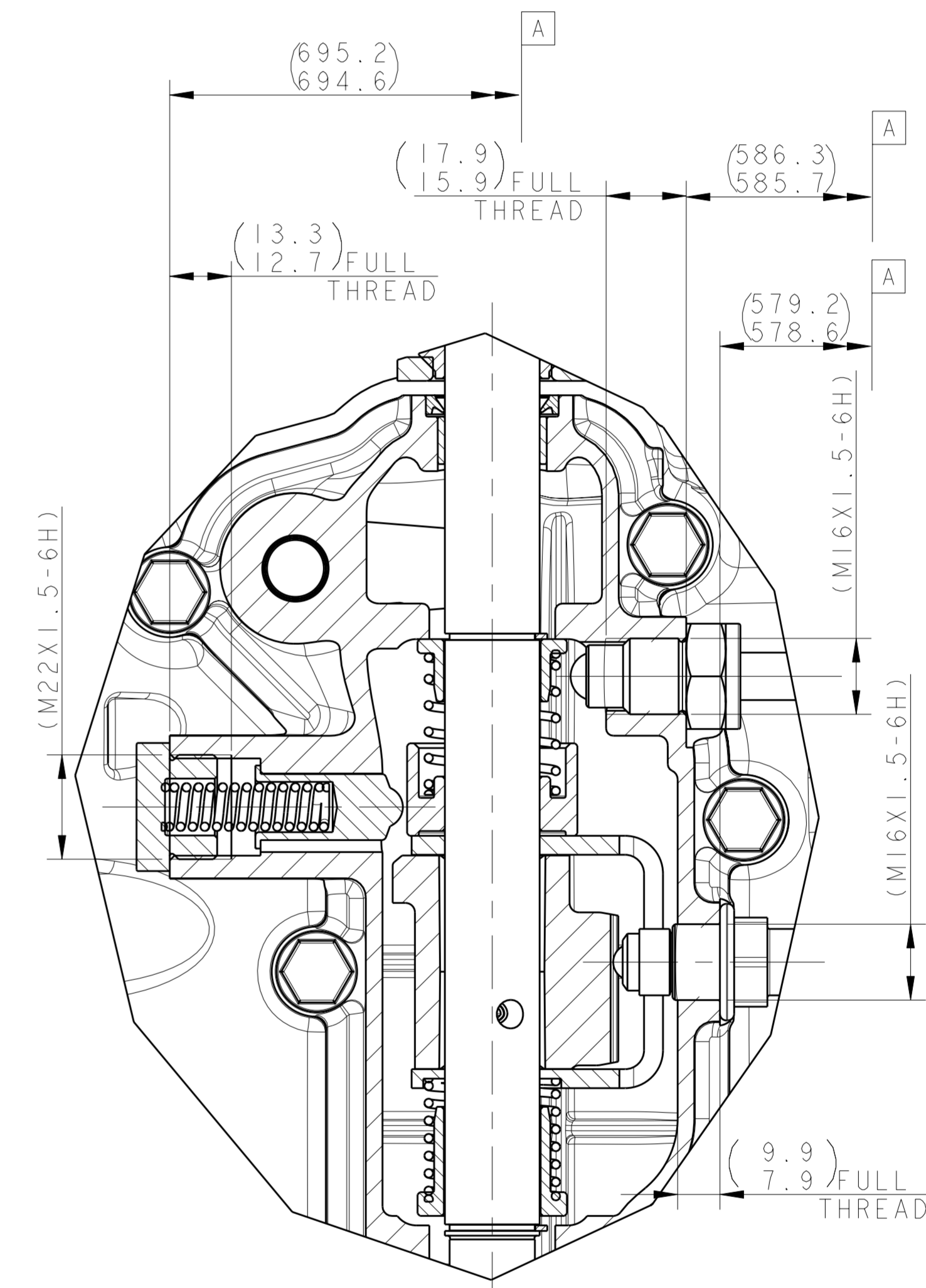
VIEW ON ARROW V4



REAR VIEW



SECTION G-G



SECTION E-E

LTRS		REVISIONS			
ORIGINATOR	CHECKER	ENGR APP	MATL APP		
FEASIBILITY APPROVED					
SYS 20030827 G. MILLER2	CMPT 20030827	MFG 20030827 T. WALSH	ASY 20030827 M. LINGREN		
RELEASED 4GTV-7003-AA NVGT-E-11592976-000					
L. KIERNAN	T. WALSH	G. MILLER2			
FEASIBILITY APPROVED					
SYS 20031125 G. MILLER2	CMPT 20031125	MFG 20031125 T. WALSH	ASY 20031125 M. LINGREN		
RELEASED 4GTV-7003-AB NVGT-E-11586392-000					
L. KIERNAN	T. WALSH	G. MILLER2			
A1 DIM 121/120.4 WAS 117.5/116.9 A2 DIM 25.3/24.7 WAS 20.3/19.7 A3 DIM R12.5/11.9 WAS R8.8/8.2 (2 PLACES) A4 DIM 17.8/17.2 WAS 11.3/10.7 (2 PLACES) A5 ADD ITEM 17 - 4GTV-7A564-AA TO BOM A6 NOTES 5&6 REMOVED A7 NOTE 21 MODIFIED A8 4GTV-7A564-AA WAS 4R83-7A564-AA FEASIBILITY APPROVED					
SYS	CMPT	MFG	ASY		
RELEASED 4GTV-7003-AC NVGT-E-11592976-000					
L. KIERNAN	T. WALSH	G. MILLER2			
B1: WAS: $\varnothing 0.05$ A NOW: $\varnothing 0.15$ A B2: ADDED: DUTIM.C ADDED: $\varnothing 0.15$ A FEASIBILITY APPROVED					
SYS	CMPT	MFG	ASY		
NVGT-E-11614398-000 040216					
S. VANHEERDEN	T. WALSH	G. MILLER2			
C1: ADD ITEM 27-4GTV-7222-AA TO BOM FEASIBILITY APPROVED					
SYS	CMPT	MFG	ASY		
NVGT-E-11628643-000					
M. DOWLING	T. WALSH	G. MILLER2			
FEASIBILITY APPROVED					
SYS	CMPT	MFG	ASY		
RELEASED 4GTV-7003-AD NVGT-E-11658383-000					
J. KIMBERLEY	T. WALSH	G. MILLER2			
FEASIBILITY APPROVED					
SYS	CMPT	MFG	ASY		
RELEASED 4GTV-7003-AE NVGT-E-11731339-000					
J. KIMBERLEY	T. WALSH	G. MILLER2			
ISS. DATE ALTERATION E.C.N. SIG.					
5	03/03/05	SEE ECN	001003812	IPK	
4	26/05/04	SEE ECN	001003428	IPK	
3	15/01/04	SEE ECN	001003197	LMK	
2	02/12/03	SEE ECN	001003075	LMK	
1	02/12/03	SEE ECN	INITIAL ISSUE	LMK	

RICARDO UK LTD
 SOUTHAM RD, BARNFORD SEWELL,
 LEAMINGTON SPA, CV31 1FD
 TEL: +44 (0)1926 519319
 FAX: +44 (0)1926 519300

SCALE 1:1

MIDLANDS TECHNICAL CENTRE

DRAWN:- L. KIERNAN DATE:- 15-Jan-04
 CHECKED:- P. MORRIS DATE:- 11-08-03
 APPROVED:- R. JANCZAK DATE:- 11-08-03

REFERENCE		07.03.00	
PART MUST COMPLY WITH MATERIAL SPECIFICATION WSS-M99P9999-A1 TO HELP SAFEGUARD HEALTH, SAFETY AND THE ENVIRONMENT			
DRAFTED IN ACCORDANCE WITH FORD MOTOR COMPANY ENGINEERING CAD AND DRAFTING STANDARDS CURRENT AT INITIAL RELEASE			
			3RD ANGLE PROJ
DIMENSIONS ARE IN MILLIMETERS			
CAD TYPE	CAD LOC.	CAD FILE	IS MASTER
PROJ	-	DRW D70343	-
OPER. NO.	UNIT	DRAWING	
-	-	4GTV-7003-AE	-
DESIGN	DETAIL	TITLE	SHT
RICARDO	RICARDO	TRANS ASY	5
CHECKED	SAFETY		OF
RICARDO	-		5
SCALE	DATE	DIVISION	
RICARDO	20030327	Y112 PLANT	-

DRW SIZE A0/E